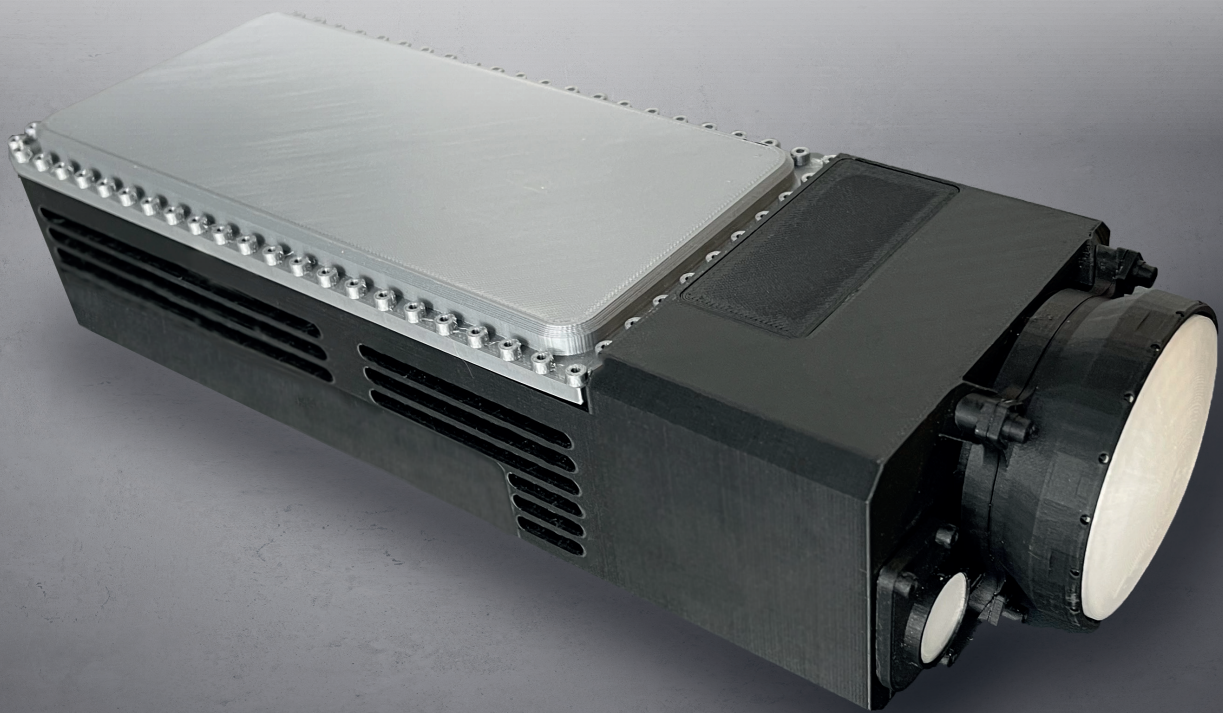


# ALADEM-150

## LASER DESIGNATION AND RANGE FINDER MODULE



### FOR AIR AND GROUND OPTRONIC PAYLOADS

- Modular architecture for easy system integration and maintenance
- Very low power consumption
- Compliant with STANAG 3733
- Excellent energy to mass ratio

**LASER TARGET  
DESIGNATOR**

# ALADEM-150

## ON BOARD MODULE FOR LASER GUIDANCE

CILAS laser target designation technology has been in operation among many armies in the world for more than 20 years.

Based on such strong experience, CILAS has developed the ALADEM-150 for optronic payloads of helicopter pods and UAVs.

**ALADEM-150 relies on laser athermal technology to provide high performance** Semi Active Laser guidance:

- no warm-up needed
- low power consumption
- no power consuming cooling system
- very low residual power consumption in stand-by mode

**ALADEM-150 is tailored to meet your requirements:**

- laser range finder (LRF) included
- laser transmitter and power supply are separated for optimal integration
- compliant with NATO or home-made codes
- additional separated command box: available on request
- form factor adjusted to integration constraints



**CILAS IS PROUD THAT ITS ALADEM-150 IS INTENDED TO BE EMBEDDED ON THE TIGER COMBAT HELICOPTER**

TECHNICAL DATA	
PULSE ENERGY	> 150 mJ
OPERATING TEMPERATURE	-40°C to +73°C
WAVELENGTH	1,064 µm
BEAM DIAMETER	56 mm
BEAM DIVERGENCE	< 0,18 mrad (90% encircled energy)
PULSE DURATION	10 - 20 ns
PULSE FREQUENCY	8 - 20 Hz
POWER CONSUMPTION	< 4 W stand by; < 132 W firing

MASS	Laser transmitter < 2,6 kg Power supply < 0,7 kg
DIMENSIONS	Laser transmitter 285 x 95 x 66 mm Power supply 215 x 68 x 44 mm
ENVIRONMENT COMPATIBILITY	MIL STD 810, MIL STD 461, RTCA DO-160G

LRF DATA	
MULTIPLE TARGETS DISCRIMINATION	25 m, up to 4 targets
RANGE	100 m to 30 km
EXTINCTION RATIO	< 41 dB

**CONTACT**  
Email: [info.defence@cilas.com](mailto:info.defence@cilas.com)  
Phone: +33 2 38 64 59 51  
LinkedIn : @CILAS

CILAS  
8, avenue Buffon  
45100 Orléans - France

[www.cilas.com](http://www.cilas.com)