

## SLD 500

## SLD 500

### SURVEILLANCE AND SNIPER DETECTION LASER SYSTEM

photo : STAT.CIC / GM J. Leveque



#### OPERATION CONCEPT

The SLD 500 laser surveillance system and sniper detector combines top of the art camera and laser technology to provide a reliable tool for surveillance and sensitive area's protection. It is designed to detect and locate any kind of optical sight systems such as optical scopes used by snipers or optronic sight systems.

The SLD 500 not only allows to accurately localise a threat but also performs clear target identification using its high definition daylight camera. SLD 500 is based on the "cat eye" effect: when illuminated by a laser beam, an optical system returns some back-scattered energy. It can be fitted on a fixed mount, on a tripod or on a static vehicle. Laser scanning can be performed while the optronic head is in motion, sweeping a scene on its tilt turret.

#### THE SLD 500 IS DEDICATED TO:

- SENSITIVE AREAS AND CRITICAL INFRASTRUCTURES PROTECTION
- POLICE FORCE CROWDS CONTROL
- STAND-BY DETECTION OF POINTED OPTICS, OFTEN ASSOCIATED WITH AN IMMEDIATE THREAT (I.E. SNIPERS)
- ACTIVE SCANNING AND MONITORING OF SPECIFIC AREAS
- THREAT IDENTIFICATION

#### DESCRIPTION

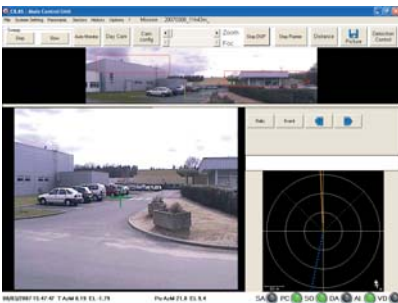
The SLD 500 consists in five major sub-assemblies:

- The optronic sensor head includes:
  - A daylight high definition camera for scene monitoring.
  - A wide angle laser beam that illuminates the sector to be searched.
  - A high-tech camera receiver; it detects the low level energy reflected by an optic.A laser designator, a Laser Range Finder, a compass and inclinometer for threat designation and localisation.
- The powered pan & tilt turret moves the optronic sensor head in azimuth and elevation to scan the suspected area.
- The main control unit, equipped with a high speed processor PC, controls and monitors the optronic sensor head and displays images of the scenery on an observation screen offering panoramic view and target radar screen view. The panoramic view presents a pixel to pixel referential coordinates of the scene given in different units according to user choices.
- A power unit block to power the system or charge batteries can be plugged either on a onboard vehicle 24V electrical supply or a standard 110/220V outlet.
- A battery unit.

The SLD 500 is a modular equipment which can be customized according to your needs with the following optional elements:

- A remote display unit: with this module, the intervention team sees in real time the view available from the main control unit and the localisation of the threat.
- An infrared camera can be mounted on the system for night vision.





CILAS  
8, AVENUE BUFFON  
ZI LA SOURCE  
45063 ORLEANS (FRANCE)  
Tel: +33 2 38 64 40 05  
Fax: +33 2 38 64 40 72  
info.defence@cilas.com  
www.cilas.com

## MILITARY PROGRAMS

### OPERATIONAL CHARACTERISTICS

#### Azimuth and elevation

- Panoramic view on 360° in azimuth (-/+ 180°)
- -30° / +45° in elevation

#### Detection

- Detection field: 7° x 5°

#### Scanning

- Manual by joystick
- Automatic, programmable up to 5 areas

#### Surveillance

- As wide as the panoramic view (- / + 180°)
- Up to 5 interest areas

#### Mission management

- Deployment parameters storage
- Surveillance parameters storage
- Events storage: Optical Sight Localisation, Range, Image, etc

### PHYSICAL CHARACTERISTICS

#### Packaging volumes and weight

- Optronics Head Luggage, 29Kg, 93l  
Size: 300 x 635 x 490 mm
  - Optronic sensor head, 6.7Kg  
Size: 220 x 250 x 210 mm
  - Powered pan & tilt turret, 5.5Kg  
Size: 260 x 190 x 170 mm
- Main control unit luggage, 17Kg, 67l  
Size: 220 x 625 x 490 mm
- Batteries unit luggage, 23 Kg, 24l  
Size: 175 x 330 x 415 mm
- Accessories: power unit block, vehicle mount, cables, 29 Kg, 48l  
Size: 210 x 440 x 520 mm
- Remote Display unit, 17 Kg, 48l  
Size: 210 x 440 x 520 mm
- Tripod, 17 Kg, 47l  
Size 250 x 250 x 750 mm

Standard System overall weight less than 120 Kg split in less that 30Kg operational rugged burden for an overall storage volume under 300l.

### ELECTRICAL

- Mains (MIL STD 1275 A)  
24 V electrical supply or a standard 110 / 220 V outlet  
24 V battery (option), 4 hours autonomy

### ENVIRONMENTAL CONDITIONS

- Sensor head and turret  
Operating temperature: - 20° C to + 50° C
- PC Control units  
Operating temperature: - 10° C to + 50° C

### OPTIONS

Full Integrated Interface with optional additional detectors and surveillance systems (infrared or thermal camera, acoustic detector, etc). Custom design for the integration in sights, multiple sensor heads network connected to a Security Center.